



## G SERIES SANITARY CLAMP HIGH TEMPERATURE (SIP) (PRECISION TURBINE METERS)

The G Series High Precision Meter is the most accurate of all the FLOMEC® Turbine Meters:

### FEATURES / BENEFITS

- Meter includes a traditional design
- Available in a variety of sizes
- Low Profile option available

## APPLICATIONS

- |  |                                  |
|--|----------------------------------|
| • Fuel                                       | • Process Control                |
| • Batching                                   | • Chemical Feed Lines            |
| • Food & Beverage                            | • Irrigation                     |
| • Petro Chemicals                            | • High Water Volume Mixing       |
| • Pharmaceuticals                            | • High Precision / High Pressure |
| • Thin Viscosity Fluids Under 100 Centipoise |                                  |

## PRODUCT CONFIGURATION

### PRODUCT IDENTIFIER **1**

**G** = G Series Precision Turbine Meter

### FITTING TYPE **2**

**SC** = Sanitary Clamp

### SHAFT / SLEEVE BEARING / THRUST BEARING **3**

**PS** = Stainless Steel / PEEK / PEEK

### TURBINE SIZE & FLOWRATE **4**

**-100** = 1" Turbine, 1-1/2" Clamp

**-100L** = 1" Turbine, 1-1/2" Clamp, Low Profile Adapter

**-150** = 1-1/2" Turbine, 1-1/2" Clamp

**-150L** = 1-1/2" Turbine, 1-1/2" Clamp, Low Profile Adapter

**-200** = 2" Turbine, 2" Clamp

**-200L** = 2" Turbine, 2" Clamp, Low Profile Adapter

**1** **2** **3** **4**  
 --->>> **G SC PS -150**

## APPROVALS



GSCPS Meters carry a



**Sanitary Rating.**

**Flowmeters for milk and milk products, Number 28-04.**

This meter meets the strict 3-A Sanitary Standards using the new "Third Party Verification" (TPV) program. Our methods of design, construction and traceability of components have been reviewed and approved.

The internals of this meter are machined or polished to meet 3-A self-draining and cleaning requirements (Ra 32). The GSCPS Meter meets Clean in Place (CIP), Steam in Place (SIP) and Clean Out of Place (COP) requirements.

## SPECIFICATIONS

<b>Design Type:</b>	Turbine		
<b>Fitting Type:</b>	Sanitary Clamp		
<b>Housing Material:</b>	316 Stainless Steel		
<b>Meter Sizes Available:</b>			
For GSCPS	1" 1-1/2" 2"		
<b>Meter ID:</b>	1" --> 1-1/2" Fitting		
	1-1/2" --> 1-1/2" Fitting		
	2" --> 2" Fitting		
<b>Flow Range:</b>	1" (100)	6.7 - 67 GPM	(25 - 252 L/min)
	1-1/2"(150)	17.7 - 177 GPM	(67 - 670 L/min)
	2" (200)	33 - 330 GPM	(125 - 1250 L/min)
<b>Accuracy (Linearity):</b>	± 0.5%		
<b>Repeatability:</b>	± 0.1%		
<b>Pressure Rating:</b>	Limited by fitting size, clamp size and temperature.		
<b>Operating Temperature Range:</b>			
For GSCPS:	-100° F to 225° F (-74° C to 107° C)		
For SIP (up to 1 hour):	285° F (140° C)		
<b>Typical K-Factor:</b>	1" (100)	896 PPG (237 Pulses/L)	
	1-1/2"(150)	340 PPG (90 Pulses/L)	
	2" (200)	181 PPG (48 Pulses/L)	

## ACCESSORIES / ELECTRONICS

Part No.	Description
80001101	Weather proof enclosure - Zinc
80001105	Weather proof enclosure - SS
F Series (F018/F127/F130)	Remote Electronics
145506-01	Kit, Adapter, G Series-QSI1-Q09 Display
145506-02	Kit, Adapter, G Series-QSI2-Q09 Display
145506-03	Kit, Adapter, G Series-QSI3-Q09 Display
145506-04	Kit, Adapter, G Series-QSI1-No Display
145506-05	Kit, Adapter, G Series-QSI2-No Display
145506-06	Kit, Adapter, G Series-QSI3-No Display

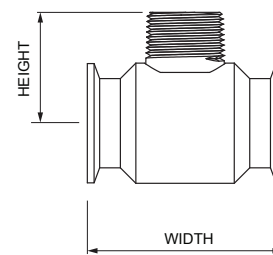
<b>Wetted Materials:</b>	Housing:	316 Stainless Steel
	Bushings & Bearings:	PEEK
	Shaft:	316 Stainless Steel
	Rotor:	CD4MCu Stainless Steel
	Rotor Supports:	316 Stainless Steel
	Retaining Rings:	300 Series Stainless Steel
<b>Recommended Strainer Size:</b>	1"	40 mesh (420 µm)
	1-1/2"	18 mesh (1000 µm)
	2"	14 mesh (1410 µm)
<b>Frequency Output:</b>	1" (100)	100 - 1000 Hz
	1-1/2"(150)	100 - 1000 Hz
	2" (200)	100 - 1000 Hz
<b>Calibration Report:</b>	Comes standard with G Series meters.	
	N.I.S.T. - Certification available.	

## DIMENSIONS

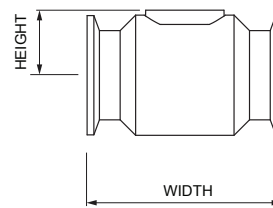
Meter Size	Length " (mm)	Height " (mm)
1/2"	2.75 (70)	1.63 (41)
3/4"	3.25 (82)	1.84 (47)
1"	3.56 (90)	1.84 (47)
1-1/2"	4.59 (116)	2.11 (53)
2"	6.06 (154)	2.39 (61)

Meter Size	Length " (mm)	Height " (mm)
1/2"	2.75 (70)	0.79 (20)
3/4"	3.25 (82)	1.03 (26)
1"	3.56 (90)	1.03 (26)
1-1/2"	4.59 (116)	1.21 (31)
2"	6.06 (154)	1.45 (37)

## GSCPS STANDARD



## GSCPS LOW PROFILE



**Service & Warranty:** For technical assistance, warranty replacement or repair contact your **FLOMEC®** or **GPI®** distributor: In North or South America: **888-996-3837 / FLOMEC.net**  
Outside North or South America: **+61 2 9540 4433 / FLOMEC.net**